



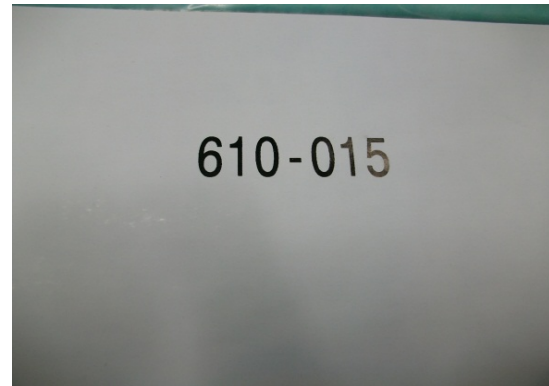
2820 S. English Station Road - Louisville, KY 40299
 Tel: (502) 357-0132 Fax (502) 267-8379

Date: 21-Feb-13 TEST NO. 13-0251

ASHRAE Standard 52.2-2007 TEST REPORT

Filter Description

Manufacturer	Viskon-Aire Corp
Filter Model	AS-65%
Part Number	610-015
Generic Filter Type	Pocket Filter
Nominal Dimensions (H x W x D)	24"x24"x22"
Pocket / Pleat Quantity	8 Pockets
Media Type	Synthetic Meltblown
Est. Gross Media Area	Standard
Adhesive Type	N/A



Test Conditions

Loading Dust Type	ASHRAE	Test Air Temp (degrees F.)	72
Barometric Pressure (In. Hg.)	29.74	Relative Humidity (%)	27

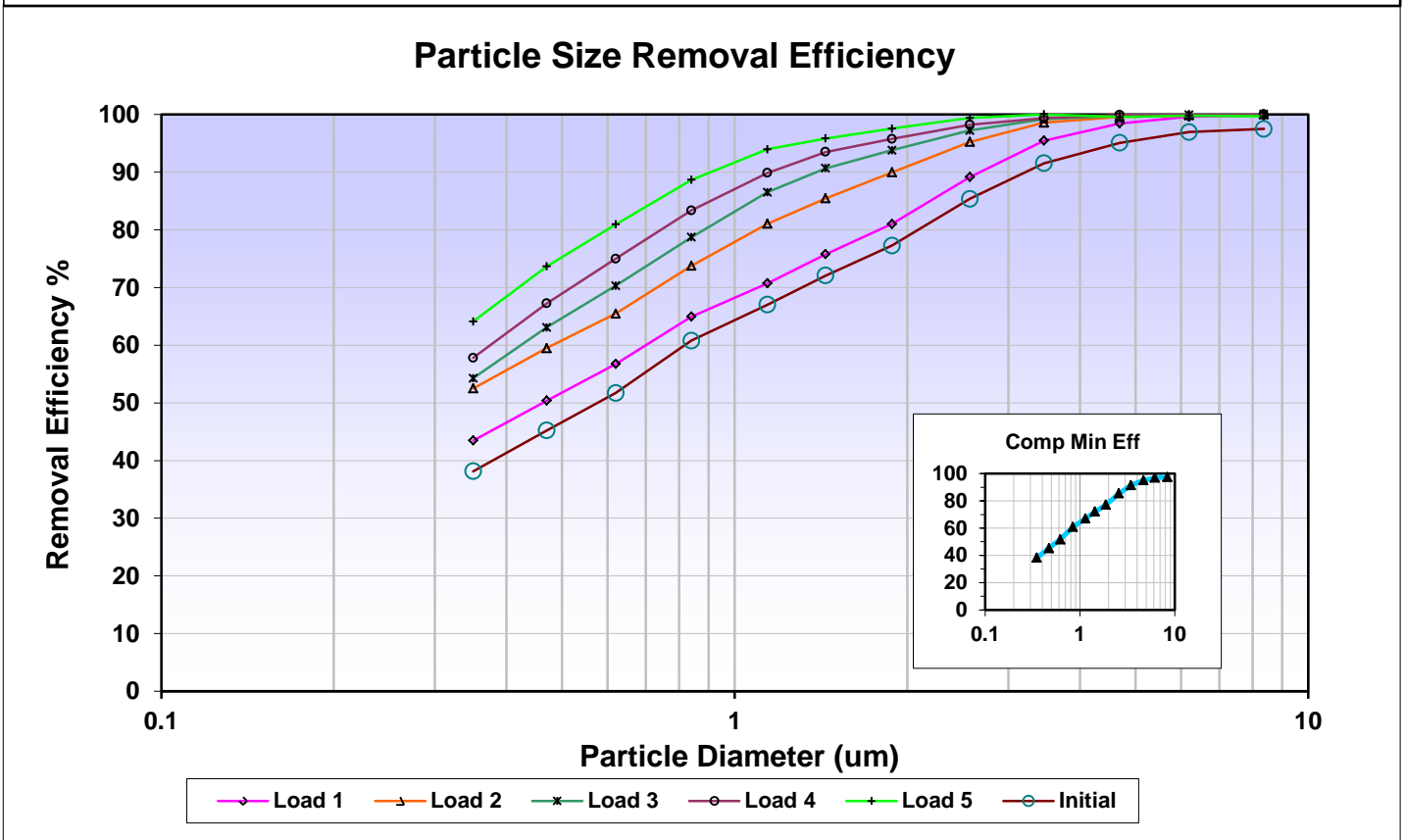
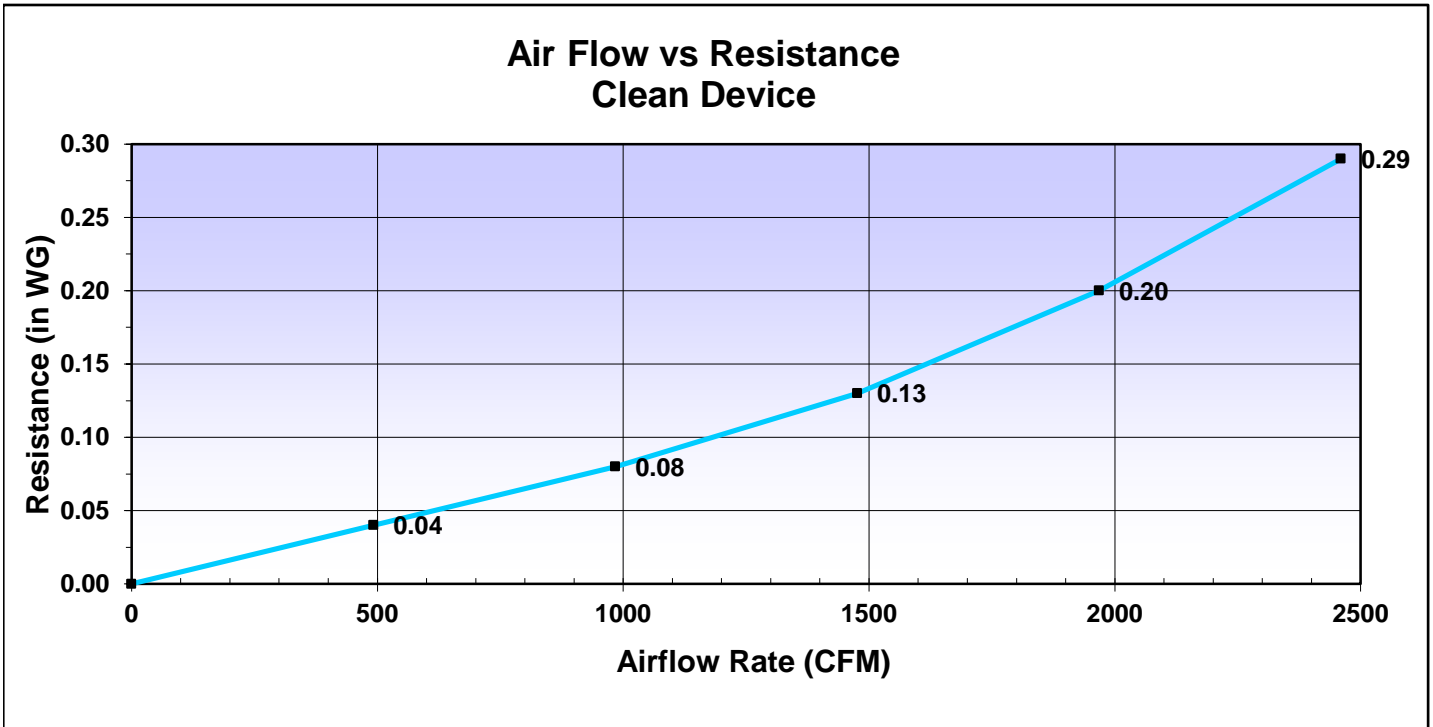
Test Results

Airflow Rate (CFM)	1968
Nominal Face Velocity (fpm)	492
Initial Resistance (in WG)	0.20
Final Resistance (in WG)	1.50
E1 (%) Composite Minimum Avg. Efficiency 0.30 - 1.0 um	49
E2 (%) Composite Minimum Avg. Efficiency 1.0 - 3.0 um	75
E3 (%) Composite Minimum Avg. Efficiency 3.0 - 10.0 um	95
Minimum Efficiency Reporting Value (MERV)	MERV 11 @ 1968 CFM

Comments Tested For: Visikon-Aire Corp
 Dust Fed (gms) to Final Resistance: 146
 Dust Holding Capacity (gms) 144
 Average Arrestance (%) 98.8

Approval:

Test No. 13-0251
 Date: 21-Feb-13



Blue Heaven Technologies

2820 S. ENGLISH STATION ROAD - LOUISVILLE, KY 40299
 Tel: (502) 357-0132

ASHRAE Standard 52-2007

Test Report

Test No. 13-0251

Date: 21-Feb-13

Data - Initial Resistance

Airflow (CFM)	Resistance (in WG)
0	0.00
492	0.04
984	0.08
1476	0.13
1968	0.20
2460	0.29

Data - Particle Removal Efficiency

Particle Size Range (um)	Geometric Mean Diam (um)	Particle Removal Efficiency (%)							
		CME	Initial	Load 1	Load 2	Load 3	Load 4	Load 5	
0.30 - 0.40	0.35	38.1	38.1	43.5	52.5	54.3	57.8	64.1	
0.40 - 0.55	0.47	45.2	45.2	50.4	59.5	63.1	67.2	73.6	
0.55 - 0.70	0.62	51.7	51.7	56.7	65.5	70.3	75.0	80.9	
0.70 - 1.00	0.84	60.8	60.8	64.9	73.8	78.7	83.3	88.6	
1.00 - 1.30	1.14	67.0	67.0	70.7	81.0	86.5	89.8	94.0	
1.30 - 1.60	1.44	72.1	72.1	75.8	85.4	90.6	93.5	95.8	
1.60 - 2.20	1.88	77.3	77.3	81.0	90.0	93.8	95.7	97.5	
2.20 - 3.00	2.57	85.4	85.4	89.1	95.2	97.2	98.2	99.4	
3.00 - 4.00	3.46	91.5	91.5	95.5	98.6	99.2	99.3	100.0	
4.00 - 5.50	4.69	95.1	95.1	98.4	99.5	99.7	99.9	99.5	
5.50 - 7.00	6.20	96.9	96.9	99.6	99.8	99.9	100.0	99.8	
7.00 - 10.00	8.37	97.5	97.5	99.8	100.0	100.0	100.0	99.6	
		CME	Initial	Load 1	Load 2	Load 3	Load 4	Load 5	
Resistance after Dust Load (in WG) ----->				0.24	0.53	0.85	1.18	1.50	
Dust Load (gms) ----->				26	91	117	135	146	