

# VISKON-AIRE\* Air Filter Products

## SuperCel 24 V Max HEPA Filter

Viskon-Aire\* SuperCel 24 V Max HEPA filter is designed to withstand the toughest operating environments. The SuperCel 24 V HEPA filter is specifically designed for high flow applications that require HEPA filtration at the lowest possible pressure drop while maintaining their specified penetration efficiency. The V pleat formation has a penetration efficiency of 99.99% at 0.30µm and can withstand high air flows exceeding 600 FPM and a pressure drop of 1.0" w.g. while maintaining the integrity of the filter.

The Visikon-Aire SuperCel 24 V Max HEPA filter is manufactured with "PerForm" wet laid micro fiberglass media. The SuperCel 24 V Max filter delivers HEPA efficiency for the life of the installation. The filter is designed with optimized pleat geometry and surface area to minimize energy usage and maximize particle loading, providing extended life and the lowest pressure drop possible. Each pack is potted within a non-corrosive plastic frame to eliminate bypass in the filter. The SuperCel 24 V Max HEPA filter incorporates recessed carry-all handles for ease of handling and installation.

The media area is optimized, and the pleat geometry allows for the lowest pressure drop possible, in some cases the SuperCel 24 V Max may have less media area than competitive HEPA filters, yet will still have an overall lower ΔP.

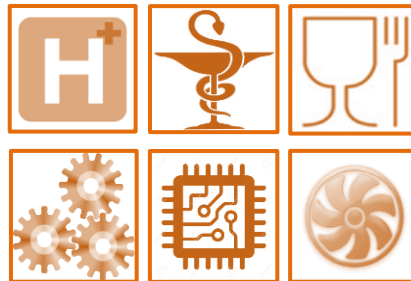
The Visikon-Aire\* SuperCel 24 V Max HEPA is tested to ISO EN1822 Test Standard.

### The Visikon-Aire\* SuperCel 24 Filter Benefits:

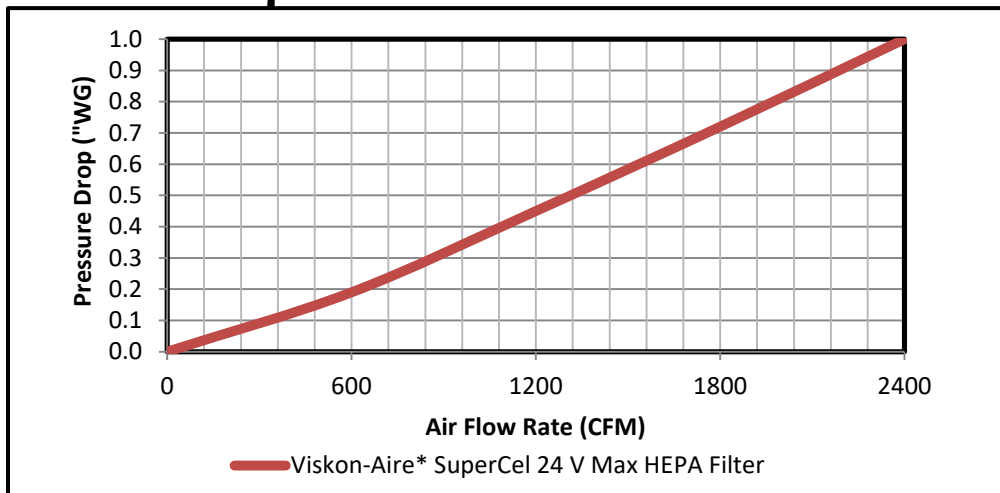
- Longer service life due to optimized pleat geometry and large surface area - 430 sq. ft.
- Low pressure drop (ΔP) at 600 FPM 1.00" w.g.
- Two component continuous polyurethane gasket
- All plastic construction with built-in handles
- Chemical resistant ABS plastic construction
- 100% RH resistance
- Maximum Temperature 175°F (79.4°C)



| Performance                | Results                        |
|----------------------------|--------------------------------|
| Pressure Drop @ 2,400 CFM: | 1.00" w.g. ( 249Pa)            |
| Efficiency:                | 0.3µm 99.99% (H13)             |
| Final Pressure Drop:       | 2.5" w.g. (622 Pa)             |
| Media:                     | Perform high permability glass |
| Media Area:                | 430 sq. ft (39.95)             |



### Pressure Drop Curve



*“When Clean Air is Critical”*

## Performance Technical Data:

| Viskon-Aire*<br>Model<br>Number | ISO<br>EN1822<br>HEPA<br>Class | Actual Dimensions<br>Inches (mm) |              |                | Capacity<br>CFM<br>(m <sup>3</sup> /hr) | Initial Pressure<br>Drop<br>inches w.g.<br>(Pa) | Media<br>Area<br>ft <sup>2</sup> (m <sup>2</sup> ) |
|---------------------------------|--------------------------------|----------------------------------|--------------|----------------|---|---|--|
|                                 |                                | Height                           | Width        | Depth          |   |   |  |
| VASCV24X24                      | H13                            | 24"<br>(610)                     | 24"<br>(610) | 11.5"<br>(292) | 2,400<br>(4077)                         | 1.00" w.g.<br>(249 Pa)                          | 430 ft <sup>2</sup><br>39.95 m <sup>2</sup>        |
| VASCV12X24                      | H13                            | 12"<br>(305)                     | 24"<br>(610) | 11.5"<br>(292) | 1200<br>(2038)                          | 1.00" w.g.<br>(249 Pa)                          | 215ft <sup>2</sup><br>19.97 m <sup>2</sup>         |
| VASCV18X24                      | H13                            | 18"<br>(457)                     | 24"<br>(610) | 11.5"<br>(292) | 1,750<br>(2,973)                        | 1.00" w.g.<br>(249 Pa)                          | 320 ft <sup>2</sup><br>29.736 m <sup>2</sup>       |
| VASCV12X12                      | H13                            | 12"<br>(305)                     | 12"<br>(305) | 11.5"<br>(292) | 600<br>(1,019)                          | 1.00" w.g.<br>(249 Pa)                          | 108ft <sup>2</sup><br>10.03 m <sup>2</sup>         |

## Performance Data Notes for Viskon-Aire Filters:

1. Pressure drop represents inches of water (1.00" w.g.) with the filter being in a clean condition. Final pressure drop is recommended to 2.5" w.g., however, it is recommended that the pressure drop change should be selected on the basis of life cycle costing that optimizes the best energy saving in HVAC systems or energy output when applied to gas turbine machinery.
2. Efficiency is based upon ISO EN1822
3. Note: Dimensions are exact

## Product Shipping & Packaging Information:

| Filter Size | Actual Dimensions<br>Inches (mm) |              |                | Weight<br>Lbs<br>(kg) | Packaging         | Carton Dimensions<br>Inches (mm)     |
|-------------|----------------------------------|--------------|----------------|-----------------------|-------------------|--------------------------------------|
|             | Height                           | Width        | Depth          |                       |                   |                                      |
| VASCV24X24  | 24"<br>(610)                     | 24"<br>(610) | 11.5"<br>(292) | 35 Lbs.<br>(15.88 kg) | One per<br>carton | 25" x 13" x 25"<br>(635 x 330 x 635) |
| VASCV12X24  | 12"<br>(305)                     | 24"<br>(610) | 11.5"<br>(292) | 25 Lbs.<br>(11.34 kg) | One per<br>carton | 25" x 13" x 13"<br>(635 x 330 x 330) |
| VASCV18X24  | 18"<br>(457)                     | 24"<br>(610) | 11.5"<br>(292) | 31 Lbs.<br>(14.06 kg) | One per<br>carton | 25" x 13" x 18"<br>(635 x 330 x 457) |
| VASCV12X12  | 12"<br>(305)                     | 12"<br>(305) | 11.5"<br>(292) | 17 lbs.<br>(7.71 kg)  | One per<br>carton | 13" x 13" x 13"<br>(330 x 330 x 330) |

Viskon-Aire Corporation has a policy of continuous research & development and reserves the right to change the design and specifications without notice.

## Viskon-Aire\* High Performance Pre-filter Products

Viskon-Aire Corporation manufactures a complete line of complementary pre-filter products. Viskon-Aire offers a wide efficiency range of 4V-Cell filter from MERV 13, to MERV 16 to protect your SuperCel 24 V HEPA filter from prematurely loading with particulate. With Viskon-Aire's high quality pre-filter portfolio, you can select filters which will protect your final filter investment and ensure long life of the total filter system, contact your Viskon-Aire representative, or your Viskon-Aire in-house factory representative.

**Viskon-Aire Corporation**  
Telephone: (410)-543-8802 ✦ Email: [sales@viskon-aire.com](mailto:sales@viskon-aire.com)  
F.O.B. Salisbury, Maryland  
[www.Viskon-Aire.com](http://www.Viskon-Aire.com)